

CAN'T TAKE MY EYES OFF OF YOU

ARR: MILES JACKSON

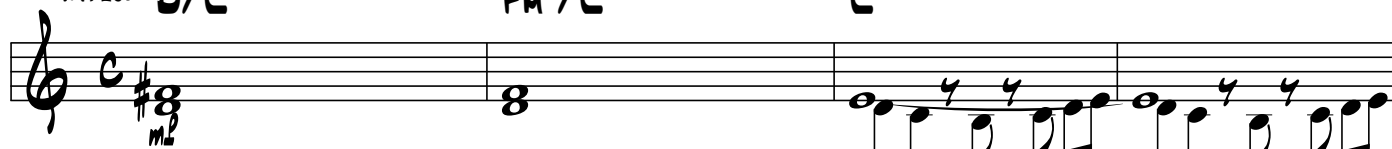
WWW.MA-ME-0.COM

OLD ROCK BALLAD

INTRO: D/C

F#m/C

C

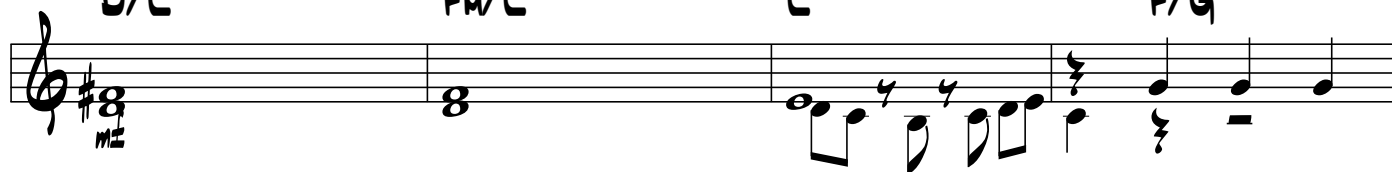


D/C

F#m/C

C

F/G



(A)

C

Cmaj7



C7

F



F#m

C



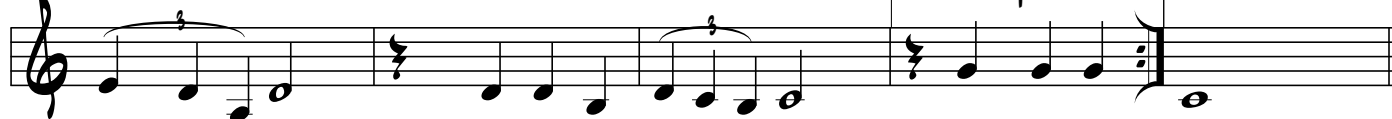
D/C

F#m/C

C

1 F/G

2 C



(B)

Dm

F/G

C6



Handwritten musical score for "CAN'T TAKE MY EYES OFF OF YOU P. 2". The score is written on ten staves, each with a treble clef and a key signature of one sharp (F#). The notation includes various chords and melodic lines.

Staff 1: Chords: D_M, F/G, C⁶, A7(+9+5). Includes a repeat sign at the end.

Staff 2: Chords: D_M, F/G, G⁷⁻⁹, E_M, G/A, A_M.

Staff 3: Chords: D_M, F/G, G, C⁶, A7(+9+5).

Staff 4: Chords: D_M, F/G, G⁷⁻⁹, E_M⁷, G/A, A_M.

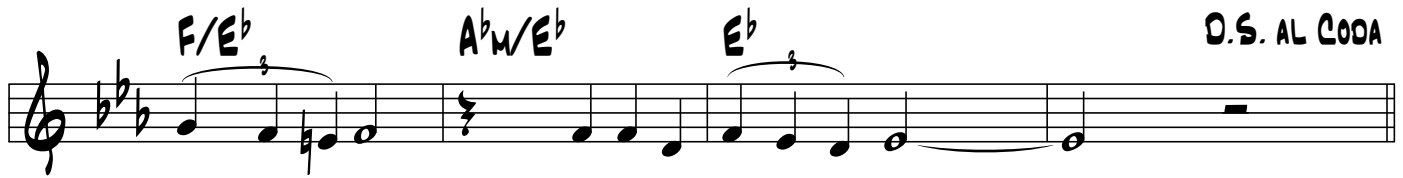
Staff 5: Chords: D_M, E_M, F, B^b9.

Staff 6: Chords: E^b, E^bMA₉7. Includes a repeat sign at the end.

Staff 7: Chords: E^b7, A^b.

Staff 8: Chords: A^b_M, E^b.

D.S. AL CODA



FINE